



RCM
STARLITE SOLUTIONS (PTY) LTD



"Hard work beats talent, when talent doesn't work hard"

Non-Destructive Testing and Heat Treatment Services



About Us

RCM Starlite Solutions has been in existence since 2017, we have now expanded our organisation and introduced a new developing Non-Destructive Testing and Heat Treatment Division. We have a core team with over 40 years Senior Construction Management & Engineering experience, including International Oil & Gas expertise. We are completely focused on ensuring the successful completion of each task to the satisfaction of our clients.

One of the corner stones of our Quality NDE service is Integrity. As RCM, we benchmark the highest standards with regards to quality and we constantly strive to meet or exceed the requirements of our clients. Our staff have individual responsibilities for ensuring this high standard is achieved throughout the company.

The safety of our staff, the personnel of our clients and any other party is of paramount importance. We provide and maintain safe and healthy working conditions using certified equipment, systems and providing the necessary information, instruction and training.

The shareholders are actively engaged in the daily running and operations of our organisation. RCM Management are fully involved in the Implementation and maintenance of the Corporations ISO 9001 accredited Quality Management System.

Mission

RCM Starlite Solutions is dedicated to delivering, effective, efficient and respectful service with integrity and accountability and to provide our customers the highest level of quality, service of fair and market competitive process.

Vision

Our vision is to be the employer of choice by maintaining the highest of professionalism, integrity, honesty and fairness in our relationships with our suppliers, sub-contractors, professional associates and customers. To earn the life time loyalty of our customers by consistently delivering frequent, high performing services which offer excellent values in:

- Non-Destructive Examination and Heat Treatment Services

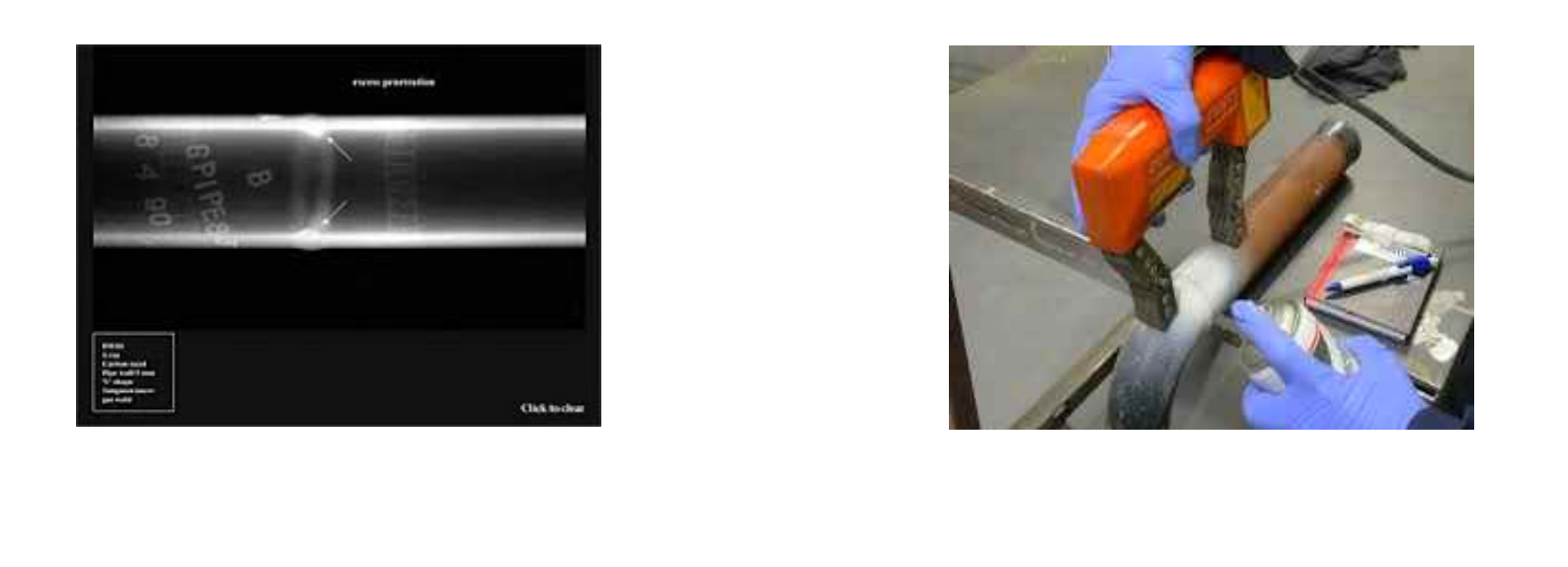
Values

We can shape today and prepare for tomorrow because we believe in the following values:

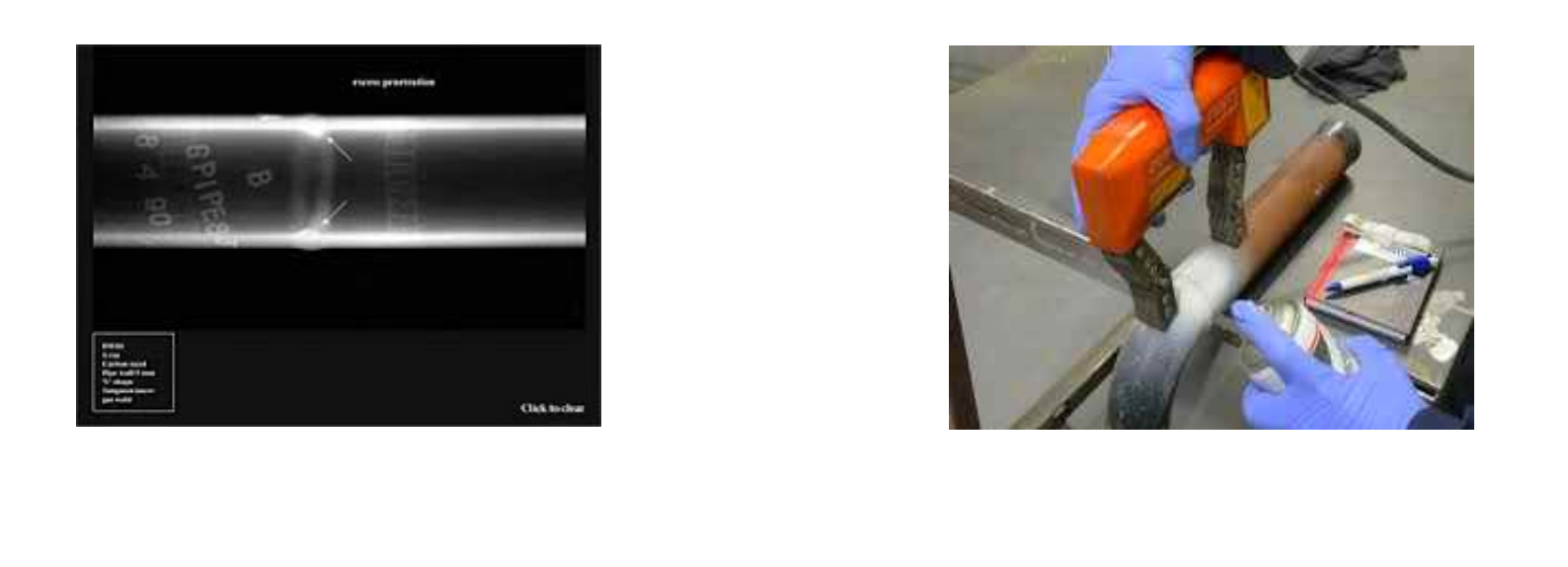
- Respect & Excellence
- Quality
- Safety
- Professionalism
- Efficiency
- Caring
- Teamwork

I) Radiography	ii) Magnetic particle testing
----------------	-------------------------------

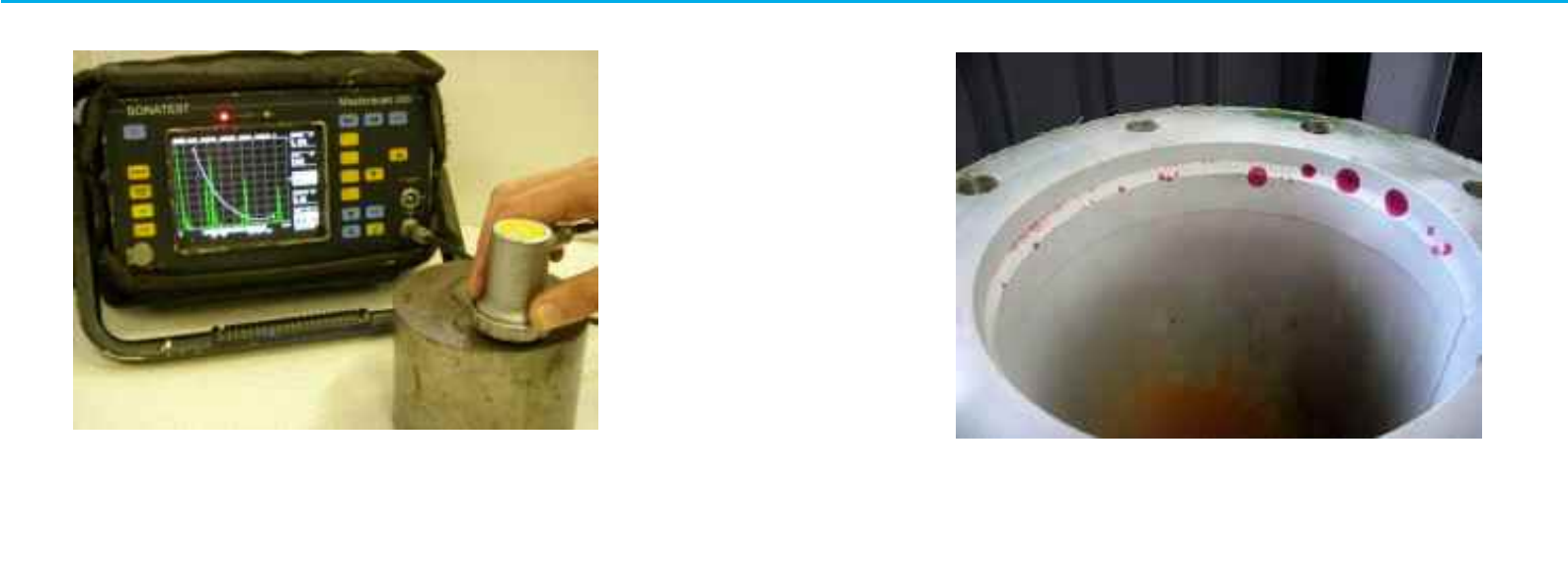
I) Radiography	ii) Magnetic particle testing
----------------	-------------------------------



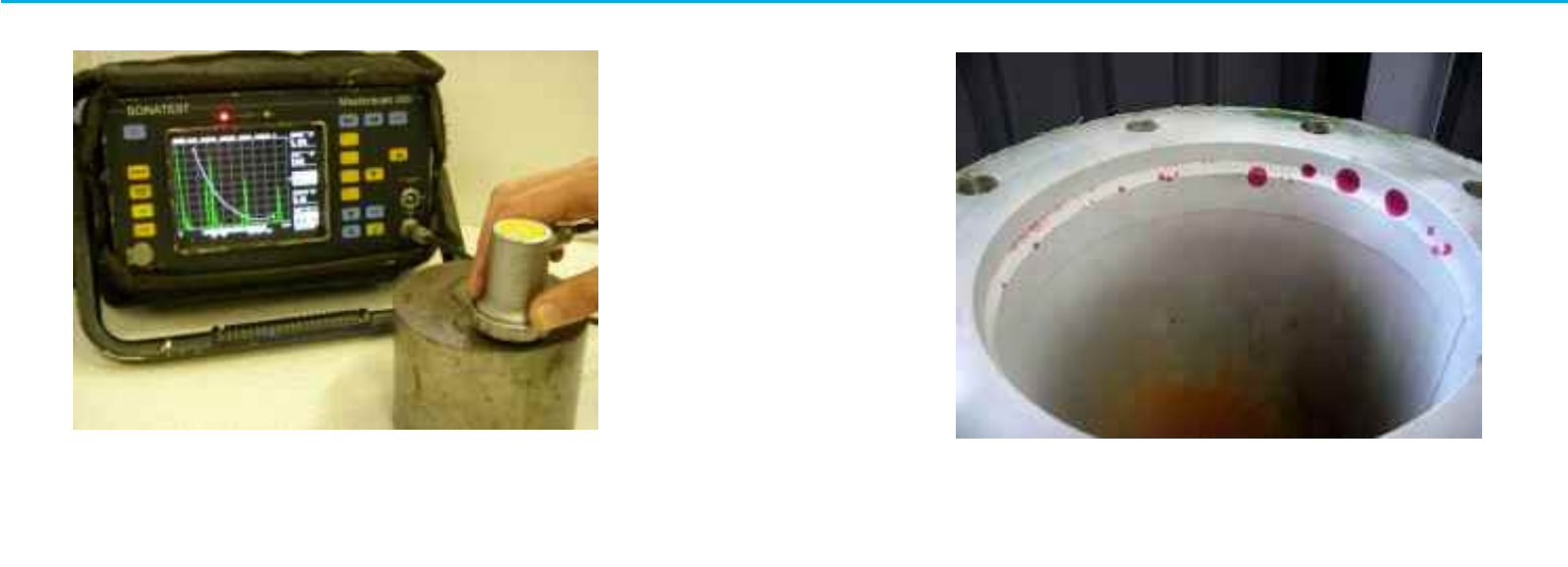
I) Radiography	ii) Magnetic particle testing
----------------	-------------------------------



- iii) Ultrasonic testing
- iv) Penetrant testing



- iii) Ultrasonic testing
- iv) Penetrant testing



Conventional NDT RT – Radiographic Testing

Advantages:

- Volumetric test
- Permanent visual image
- Portable equipment

Limitations:

- Safety! SAFETY!!
- Two side accessibility
- Planar flaws not detected



Conventional NDT MPI - Magnetic Particle Inspection

Advantages

- Low cost
- Easy and effective
- Relatively quick results

Limitations

- Surface test
- Specimen must be clean
- Ferro-magnetic materials only



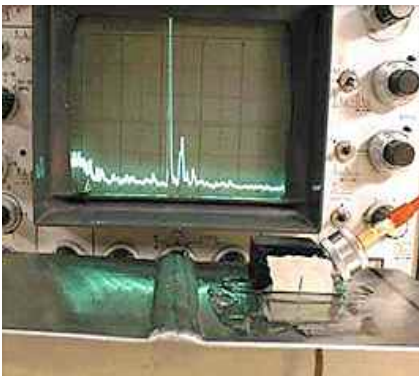
Conventional NDT UT - Ultrasonic Testing

Advantages

- Volumetric test
- No safety limitations
- Single side access

Limitations

- No permanent image
- Shape



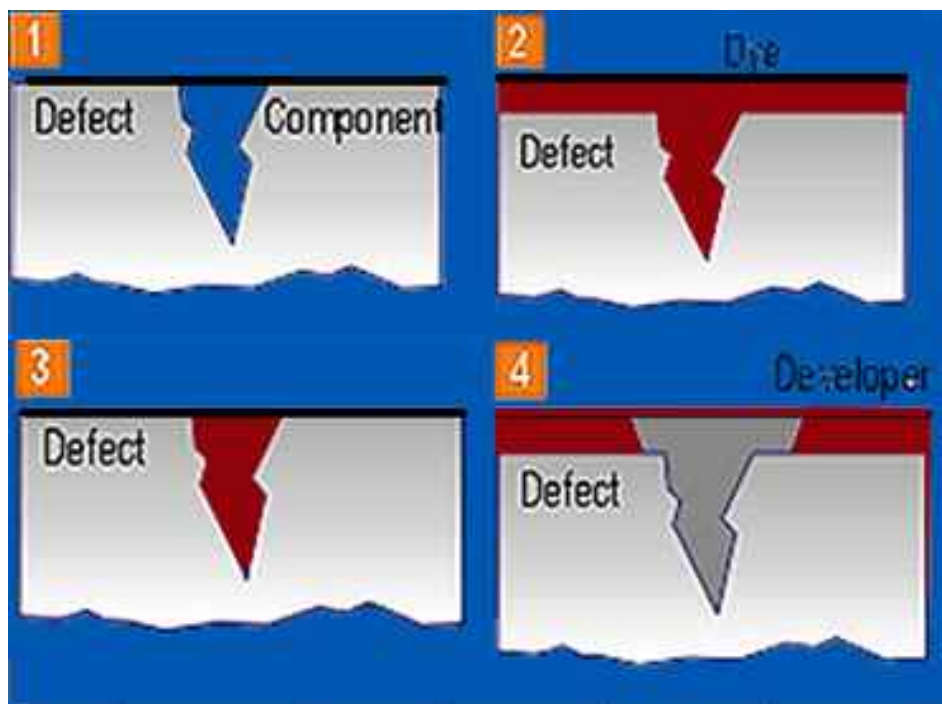
Conventional NDT – Penetrant Testing

Advantages

- Low cost
- Easy and effective
- Most materials

Limitations

- Surface test
- Specimen must be clean
- Non-porous materials only



"Holiday" Spark Tester

- Flaw "Holiday" Detection in non-conductive anti-corrosive coatings on materials
- "Spark" insulation testing.
- Audible and visual flaw indication.
- Portable, rugged and reliable.



Hardness Testing – Mic10

- MIC 10 enables quick and convenient on-site hardness testing according to the UCI method.
- The diamond indent in the material's surface is electronically measured and instantly displayed without using the cumbersome optical evaluation normally associated with conventional hardness testers.



PMI – Positive Material Identification

- Arc and spark source capabilities.
- Parallel to laboratory accuracy.



Advanced NDT – Lo-Rad Gamma - Ray

- Selenium Source (Se -75)
- Tungsten/lead blankets
- Low energy radiation
- Smaller containment area - safety enhancement
- Increased film sensitivity
- No effect on plant equipment - nucleonics



Advanced NDT – Digital Radiography

- Images can be scanned
- Stored on all storage devices
- Processing and supplying information quicker
- Close proximity testing capability.



Heat Treatment

Heat treatment is a service RCM provides designed to overcome thermal stress problems. Both now and in the future. For any client, loss of operational capability is costly, and at RCM we have the ability to respond efficiently with positive analysis and recommendations coupled with in-house technical to help reduce these costs and enhance reliability. Expertise.

On Site Services Include:

- Electrical surface heating
- On-site pre/post weld heat treatment
- Stress relieving on pipes and vessels
- Refractories dry out
- Ladle drying



Heat Treatment/Electrical Heat Treatment



Thermocouple
Attachment Unit



Thermocouple wire



Ceramic fibre Blanket



Heating elements used for pre-heating

Heat Treatment-Gas Division

RCM offers the highest quality service providing high velocity gas units for:

- Refractories dry out and curing.
- Temporary furnaces.
- Post weld heat treatment of large fabrications by direct firing



“Hard work beats talent, when talent doesn't work hard”

6 Maryhill Road
Jacobs
Durban 4052

Tel: +27 73 352 9170

Email: jaugustus@rcmstarlitesolutions.co.za

Web: www.rcmstarlitesolutions.co.za

204 Marine Drive
Bluff
Durban 4052

Tel: +27 84 4888 145

Email: info@rcmstarlitesolutions.co.za

Web: www.rcmstarlitesolutions.co.za

Unit 39 Bridgeway Business Park
434 Sam Green Road
Rietfontein 1401

Tel: 011 872 8114 (Office)

Email: Knaicker@rcmstarlitesolutions.co.za

Web: www.rcmstarlitesolutions.co.za